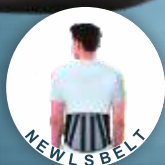


# AccuSure®

**ORTHO SUPPORT**



**PRODUCT CATALOGUE**

# PREMIUM RANGE NEOPRENE PRODUCTS

## WRIST WRAP

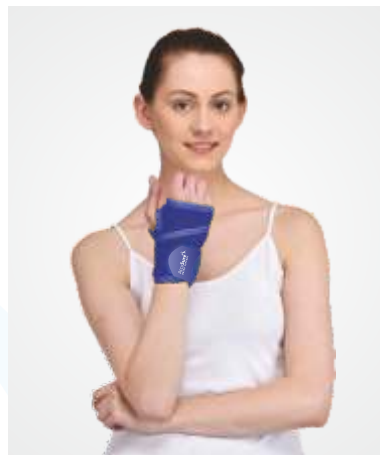


Product Code: **W1**  
Material: **Neoprene**  
Sizes Available: **One Size Fits All**

Neoprene Wrist Wrap is made of high grade neoprene bonded to nylon and has a 4 way stretch, excellent durability, strong compression and appealing aesthetics. The wrap around design with UBL fabric layer ensures customized compression, better grip, better wrist stabilization and easy application. Neoprene fabric ensures therapeutic heat, increased blood circulation and faster healing.

MRP: 350

## WRIST WRAP WITH THUMB



Product Code: **W2**  
Material: **Neoprene**  
Sizes Available: **One Size Fits All**

Neoprene Wrist Wrap with Thumb is made of high grade neoprene bonded to nylon and has a 4 way stretch, excellent durability, strong compression and appealing aesthetics. The wrap around design with anatomical thumb opening and UBL fabric layer ensures customized compression, better grip, better wrist stabilization and easy application. Thicker fabric ensures therapeutic heat, increased blood circulation and faster healing.

MRP: 470

## ELBOW WRAP



Product Code: **E2**  
Material: **Neoprene**  
Sizes Available: **One Size Fits All**

Neoprene Elbow Wrap is made of high grade neoprene bonded to nylon and has excellent durability, strong compression and appealing aesthetics. The loop lock closure and added strap ensure strong grip and firm compression. Neoprene sleeve provides therapeutic warmth around the elbow while the nylon loop lining gives a soft comfort.

MRP: 575

## TENNIS ELBOW WRAP



Product Code: **E1**  
Material: **Neoprene**  
Sizes Available: **One Size Fits All**

Neoprene Tennis Elbow Wrap is made of high grade neoprene bonded to nylon and has excellent durability, strong compression and appealing aesthetics. The loop lock closure and added strap ensure strong grip and firm compression. Neoprene sleeve provides therapeutic warmth around the elbow while the nylon loop lining gives a soft comfort.

MRP: 475

## WAIST BELT



Product Code: **B1**  
Material: **Neoprene**  
Sizes Available: **One Size Fits All**

Neoprene Waist Belt tones up the loose abdominal muscles while hiding inconspicuously under clothing. It has 4 way stretch, excellent durability and appealing aesthetics. Wrap around design with UBL fabric layer ensures customized compression, better grip and easy application. Made of high grade neoprene bonded to nylon, it is soft and comfortable to wear and absorbs sweat without swelter.

MRP: 995

## ANKLE SUPPORT



Product Code: **A1**  
Material: **Neoprene**  
Sizes Available: **One Size Fits All**

Neoprene Ankle Support is made of high grade neoprene bonded to nylon and has excellent durability, strong compression and appealing aesthetics. The Velcro closure helps adjust comfortably to most ankle sizes and ensures strong grip and firm compression. Neoprene sleeve provides therapeutic warmth around the ankle while the open toe and heel design allows full range of movement.

MRP: 575

# NEOPRENE PRODUCTS

## **NEOPRENE** **THE PREMIUM** **REVOLUTION IN** **ORTHOTICS**

Using the latest technology of polymerisation we introduce **Neoprene**- a chemically stable and exceptionally flexible yet durable class of synthetic rubber. It is proven to be highly resistant to degradation over the longest period of time. Our orthotic aids use the same Neoprene fabric bonded to nylon that offers not just a fast but comfortable orthopaedic convalescence. They are specially designed to custom fit the affected area and provide optimal compression.





## KNEE SUPPORT OPEN PATELLA



Product Code: **K1**  
Material: **Neoprene**  
Sizes Available: **One Size Fits All**

Neoprene Open Patella Knee Support provides compression, support and warmth to your knees during sprains and strains. It has 4 way stretch, excellent durability and appealing aesthetics. Anterior wrap around design with UBL fabric layer ensures customized compression, better grip and easy application. Thicker fabric ensures therapeutic heat, increased blood circulation and faster healing.

MRP: **995**

## KNEE SUPPORT CLOSED PATELLA



Product Code: **K2**  
Material: **Neoprene**  
Sizes Available: **One Size Fits All**

Neoprene Closed Patella Knee Support provides compression, support and warmth to your knees during sprains and strains. It has 4 way stretch, excellent durability and appealing aesthetics. Anterior wrap around design with UBL fabric layer ensures customized compression, better grip and easy application. Thicker fabric ensures therapeutic heat, increased blood circulation and faster healing.

MRP: **995**

# PREMIUM RANGE ELASTIC PRODUCTS

## SACRO LUMBAR SUPPORT



Product Code: **B9**  
Material: **Elastic**  
Sizes Available: **S, M, L, XL**

Elastic Sacro Lumbar Support is designed to give support and warmth to the back during sprains and strains. It is designed to fit aptly on the concerned lower back area without causing obstruction to the day-to-day movements. Made of elastic and an easy to breathe foam material, the support is strengthened by pliable splints which can be customized to the shape of the back.

MRP: **1895**

## KNEE SUPPORT



Product Code: **K9**  
Material: **Elastic**  
Sizes Available: **S, M, L, XL**

Elastic Knee Support provides compression, support & warmth to your knee's during sprains and strains. Its bi-layered construction, dermophillic cotton ensures comfort in all weather conditions. Nylon outside ensures long life, excellent aesthetics & colour fastness. Four way stretchable knit with Spandex provides effective compression, comfort and no buckling of fabric. Thick knit retains body heat, provides therapeutic warmth & assuring support.

MRP: **325**

## ANKLE SUPPORT



Product Code: **A9**  
Material: **Elastic**  
Sizes Available: **S, M, L, XL**

The bi-layered construction and dermophillic cotton of the Elastic Ankle Support ensures comfort in all weather conditions. Nylon outside ensures long life, excellent aesthetics and colour fastness. Four way stretchable knit with Spandex provides effective compression, comfort and no buckling of fabric. Thick knit retains body heat, provides therapeutic warmth and assures support.

MRP: **325**

## ELBOW SUPPORT



Product Code: **E9**  
Material: **Elastic**  
Sizes Available: **S, M, L, XL**

Elastic Elbow Support provides comfortable support with its bi-layered construction and dermophillic cotton. The nylon outside ensures long life, excellent aesthetics and color fastness. Four-way stretchable knit with spandex provides effective compression and grip. Three dimensional knitting provides zones of high compression and no compression for excellent effectiveness. Thick knit retains therapeutic warmth.

MRP: **325**

Introducing



# BAMBOO YARN



**Sourced Naturally**

From Bamboo Pulp

## BAMBOO YARN ENSURES

- ▶ **2x** **FASTER HEALING CAPACITY**  
than other cotton/nylon material aids
- ▶ **5x** **BETTER WARMTH & COMFORT**  
than other cotton/nylon material aids
- ▶ **10x** **BETTER STRETCH & AESTHETICS**  
than other cotton/nylon material aids

**NEW**

## ABOUT BAMBOO YARN MATERIAL

Bamboo yarn is a regenerated cellulosic fibre produced from naturally occurring bamboo. Repeated technological analysis has proved that this kind of fibre made of 100% bamboo pulp has a strong durability, stability and tenacity. It is characterized by its good absorption capacity, excellent permeability, soft feel, easiness to straighten and flex.



## BAMBOO YARN RANGE



**K12** KNEE SUPPORT



**A12** ANKLE SUPPORT



**E12** ELBOW SUPPORT

**AccuSure**  
ORTHO SUPPORT

# KNEE SUPPORT

**NEW**

## BAMBOO YARN

### BAMBOO YARN ENSURES

- ▶ **2x** **FASTER HEALING CAPACITY**  
than other cotton/nylon material aids
- ▶ **5x** **BETTER WARMTH & COMFORT**  
than other cotton/nylon material aids
- ▶ **10x** **BETTER STRETCH & AESTHETICS**  
than other cotton/nylon material aids

### UNIQUE FEATURES

● Microfibre structure of bamboo yarn ensures good stretchability and flexibility while the porous texture offers high absorption capacity and thereby ease of wearing.

● Horizontal seams at the patellar region facilitate easy and effortless movement while the comfortable interior lining provides adequate warmth and compression.

● Regenerated cellulosic fibre of the bamboo yarn imparts a strong durability, stability and tenacity to the product clearly making it a better alternative to cotton and nylon material orthopaedic aids.

Rediscover  
natural  
flexion  
with  
**Bamboo**



## KNEE SUPPORT



Product Code: **K 12**  
Material: **Bamboo Yarn**  
Sizes Available: **S, M, L, XL**

Bamboo Yarn Knee Support provides compression, support & warmth to your knee's during sprains and strains. Its bi-layered construction, dermophillic cotton ensures comfort in all weather conditions. Nylon outside ensures long life, excellent aesthetics & colour fastness. Four way stretchable knit with Bamboo Yarn provides effective compression, comfort and no buckling of fabric. Thick knit retains body heat, provides therapeutic warmth & assuring support.

MRP: **325**

## ELBOW SUPPORT



Product Code: **E 12**  
Material: **Bamboo Yarn**  
Sizes Available: **S, M, L, XL**

Bamboo Yarn Elbow Support provides comfortable support with its bi-layered construction and dermophillic cotton. The nylon outside ensures long life, excellent aesthetics and color fastness. Four-way stretchable knit with bamboo yarn provides effective compression and grip. Three dimensional knitting provides zones of high compression and no compression for excellent effectiveness. Thick knit retains therapeutic warmth.

MRP: **325**

## ANKLE SUPPORT



Product Code: **A 12**  
Material: **Bamboo Yarn**  
Size Available: **S, M, L, XL**

The bi-layered construction and dermophillic cotton of the Bamboo Yarn Ankle Support ensures comfort in all weather conditions. Nylon outside ensures long life, excellent aesthetics and colour fastness. Four way stretchable knit with bamboo yarn provides effective compression, comfort and no buckling of fabric. Thick knit retains body heat, provides therapeutic warmth and assures support.

MRP: **325**





I n t r o d u c i n g

AccuSure®

**KNEE SUPPORT - SPORTS**

**NEW**



AccuSure®  
ORTHO SUPPORT

**K 13**

**Knee Cap Sports**

The ultimate compression elastic knee support for person involve in sports & physical recreation has been designed to provide compression support to unstable knee and relieve the symptoms of arthritis, bursitis and tendonitis by utilising a seamless circular knit. Offering a high level of support, this knee support is ideal for those who are allergic to, dislike the bulk or heat generation of neoprene and latex.

Made from a breathable compressive four-way stretch material, this knee support targets areas that most require it, and mimics the support and action planes of key ligaments and tendons to reinforce to reinforce them. The compressive elements also helps to stimulate blood flow to help prevent it build-up of lactic acid during and after exercise, which reduces cramp and stiffness and aids in recovery and rehabilitation.

**4 WAYS  
STRECH**

**MRP: 369**

**Sizes Available: S, M, L, XL**

AccuSure®  
ORTHO SUPPORT



I n t r o d u c i n g

## ***ELASTIC RANGE PRODUCTS***

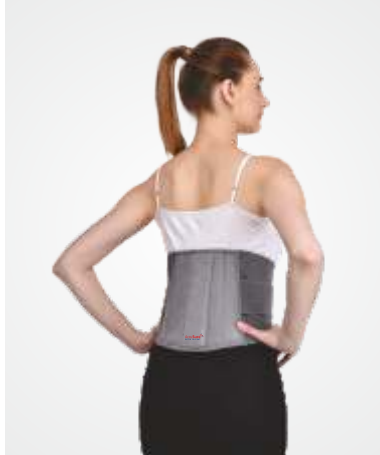


Made with high grade materials in polyester, polyamide, nylon, spandex, cotton and others, our elastic orthotic aids offer the best in class orthopaedic healing. Proven to be highly durable, easy to use and effective these products ensure optimal compression and customizable fit for all the affected areas.

**AccuSure**<sup>®</sup>  
ORTHO SUPPORT

# BACK, ABDOMINAL AND WAIST SUPPORTS

## LUMBO SACRAL SUPPORT

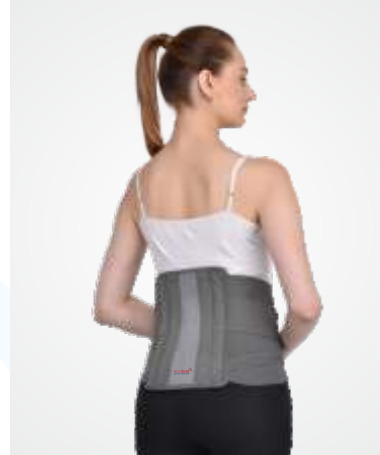


Product Code: **B4**  
Material: **Elastic**  
Sizes Available: **S, M, L, XL, XXL**

The Elastic Lumbo Sacral Support provides ideal back support for mild back ache. Flexible back splints take the shape of body and provide comfortable immobilization. Highly porous elastic webbing improves ventilation and comfort. Heat resistant rubber with high modulus of elasticity ensures durability and resilience. Double pull elastic mechanism provides extra compression and improves splinting action.

MRP: **765**

## CONTOURED LS BELT



Product Code: **B5**  
Material: **Elastic**  
Sizes Available: **S, M, L, XL, XXL**

The Elastic Contoured LS Support provides ideal back support for mild back ache. Anatomically contoured back splints take the shape of body and provide comfortable immobilization and help maintain correct posture. Highly porous elastic webbing improves ventilation and comfort. Heat resistant rubber with high modulus of elasticity ensure durability and resilience. Double pull elastic mechanism provide extra compression and improves splinting action.

MRP: **995**

## ABDOMINAL SUPPORT

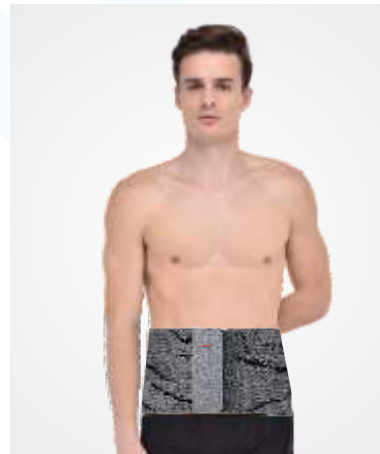


Product Code: **B3**  
Material: **Elastic**  
Sizes Available: **S, M, L, XL, XXL**

The thin construction in this single panel Elastic Abdominal Support keeps it inconspicuous through clothes. The strong and porous elastic webbing ensure good compression and improves ventilation and comfort. The broad hook loop tape flapper offers secured holding and size adjustability. Design in shades of grey provides pleasing aesthetics. Nylon reeves prevent rolling over of belt.

MRP: **585**

## TUMMY TRIMMER



Product Code: **B6**  
Material: **Elastic**  
Sizes Available: **S, M, L, XL, XXL**  
Special Size: **XXXL**

Elastic Tummy Trimmer tones up the loose abdominal muscles while hiding inconspicuously under clothing. It has extra porous three panel webbing which improves ventilation. The broad hook and loop tape offers better holding and size adjustability. The optimal compression provided by it tones up abdominal muscles post surgery, CS or delivery. It also produces an analgesic effect during sudden movements or coughing.

MRP: **675**

## TAYLOR'S BRACE

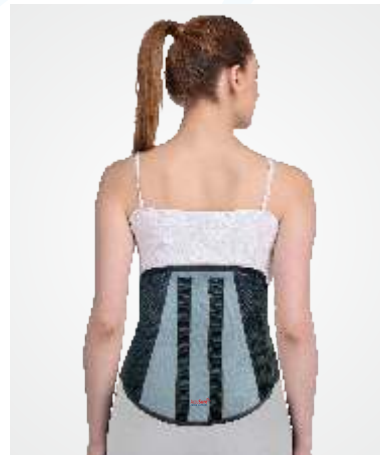


Product Code: **B7**  
Material: **Elastic**  
Sizes Available: **17" inch, 21" inch**  
Uni (**S,M,L**), Special (**XL, XXL**)

The Taylor's Brace has rigid and removable splints that are anatomically contoured to ensure perfect fitting and enhanced immobilization. Adjustable shoulder straps offer neutral spinal posture, strong grip and self tightening of the brace. PUF fused body offers good cushioning, better comfort and pleasing aesthetics.

MRP: **1875**

## NEW L S BELT



Product Code: **B10**  
Material: **Elastic**  
Sizes Available: **S, M, L, XL, XXL**  
Special Size: **XXXL**

The Elastic L S Belt provides ideal back support for mild back ache. Flexible back splints take the shape of body and provide comfortable immobilization. Highly porous elastic webbing improves ventilation and comfort. Heat resistant rubber with high modulus of elasticity ensures durability and resilience.

MRP: **699**

# KNEE SUPPORTS

## KNEE CAP



Product Code: **K4**  
Material: **Elastic**  
Sizes Available: **S, M, L, XL, XXL**

Elastic Knee cap provides compression, support & warmth to your knees during sprains and strains. Its bi-layered construction, dermophilic cotton ensures comfort in all weather conditions. Nylon outside ensures long life, excellent aesthetics & colour fastness. Four way stretchable knit with Spandex provides effective compression, comfort and no buckling of fabric. Thick knit retains body heat, provides therapeutic warmth & assuring support.

MRP: **285**

## FUNCTIONAL KNEE SUPPORT



Product Code: **K5**  
Material: **Elastic**  
Sizes Available: **S, M, L, XL, XXL**

Elastic functional knee support ensures full weight bearing and free flexion movement with its bi-axial heavy duty hinge. Four way stretchable fabric offers comfortable compression and no buckling. Wrap design with anterior closing ensures customized compression, easy application on swollen or geriatric knees. Anti tourniquet strapping ensures snug grip, but no blood constriction.

MRP: **1050**

## KNEE SUPPORT OPEN PATELLA



Product Code: **K3**  
Material: **Elastic**  
Sizes Available: **S, M, L, XL**

Elastic knee support provides rigid side splinting and free flexion movement with the help of its strong aluminum hinges. Open patella with cushion releases the patellar pressure and improves comfort. The wrap design allows customized compression and easy application on swollen, geriatric or asymmetric knees. Large dorsal opening ensures no buckling or vaso constriction.

MRP: **650**

## KNEE IMMOBILIZER



Product Code: **K7**  
Material: **Elastic**  
Sizes Available: **19" and 22"**  
**Universal (Short) S, M, L, (Long) XL, XXL**

Knee Immobilizer is an excellent brace to immobilize, support and protect the injured or operated knee while it recuperates. Anatomically contoured aluminum splints ensure perfect immobilizer & grip, enhanced comfort and no hot spots. Light weight, aesthetically smart, improves comfort and compliance.

MRP: **886 (19")**  
MRP: **1050 (22")**

## RIB BELT & BACK REST

### RIB BELT



Product Code: **B2**  
Material: **Elastic**  
Sizes Available: **S, M, L, XL**

Rib Belt helps support the injured ribs and allows for rib cage expansion. The rib belt provides for an excellent compression to assist in stabilization. Fabric made from cotton backed ventilated elastic which allows easy chest expansion and provides the support as required

MRP: **499**

### BACK REST



Product Code: **R1**  
Material: **PU Foam**  
Sizes Available: **Universal**

Anatomic design maintains the natural low back curve and relieves the anterior pressure on the vertebrae. Side supports hold the body and enhance the comfort.

MRP: **1450**



# SHOULDER AND CERVICAL SUPPORTS

## UNIVERSAL SHOULDER IMMOBILIZER

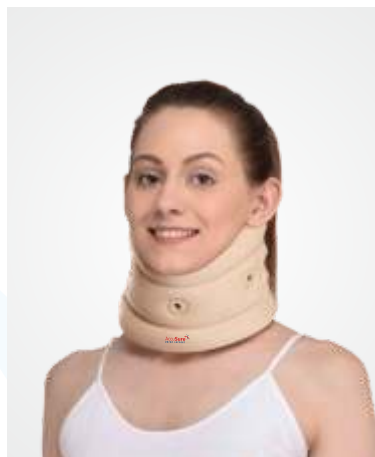


Product Code: **E7**  
Material: **Elastic**  
Sizes Available: **One Size Fits All**

Elastic Universal Shoulder Immobilizer offers durability and comfort with its three layered PUF fused fabric. Two piece design with pouch provides proper support, correct posture, better immobilization and easy application. Arm restraint band ensures additional locking and enhanced immobilization of the arm and the shoulder. Double straps on the shoulder divides the load uniformly and improves comfort.

MRP: **655**

## CERVICAL COLLAR



Product Code: **C1**  
Material: **Elastic**  
Sizes Available: **S, M, L**  
Special size : **XL**

The soft polyurethane foam of the Cervical Collar provides unmatched comfort for geriatric / prolonged use. When used as prophylactic collar it provides comfortable support during traveling. The hypo-allergenic cotton stockinet improves comfort and compliance. Anatomical design ensures uniform support, better fit and comfort. Perforated collar body improves ventilation and comfort.

MRP: **325**

## POUCH ARM SLING



Product Code: **E6**  
Material: **Elastic**  
Sizes Available: **S, M, L, XL**

Elastic Pouch Arm Sling provides comfortable support with its smart, sleek and ventilated design. Three layered PU bonded fabric offers durability, soft feel, plush looks and wrinkle free property. Easy closing and opening of buckle allows easy application and closing of the product. Adjustable ethafoam shoulder pad takes the load of the arm. Optimal positioning of the arm can be achieved by adjusting the sling.

MRP: **350**

## CERVICAL PILLOW REGULAR



Product Code: **C2**  
Material: **PU Foam**  
Sizes Available: **One Size Fits All**

The Cervical Pillow is made of high density foam that ensures effective support to the neck, good resilience and long life. Optimal hardness ensures soft, cushiony, comfortable support. Scientific design maintains the neck in slight hyper-extension and provides muscle relaxation. Plush covering adds to the soft feel, good aesthetics and durability.

MRP: **1095**

## ELASTIC SHOULDER IMMOBILIZER



Product Code: **E10**  
Material: **Elastic**  
Sizes Available: **(Universal) S, M, L**  
Special size : **XI, XXL**

The Elastic Shoulder Immobilizer provides six way immobilization with its scientific and ergonomic design. With an open ventilated design it can be used by patients confined to bed or with open shoulder wounds. Additional shoulder cup improves immobilization and offers better grip to the injured shoulder.

MRP: **725**

## CLAVICLE BRACE WITH VELCRO



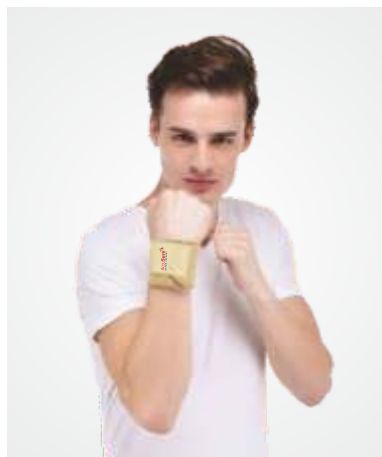
Product Code: **C3**  
Material: **Elastic**  
Sizes Available: **S, M, L, XL**

The Clavicle Brace With Velcro has reverse buckle fastening with hook loop tapes that offer better tightening and grip. PU foam padding ensures no underarm rash, better comfort and compliance. Figure of eight design with lateral vector ensures linear union of the bone and also easy application and tightening of the brace. Plush fabric offers skin friendly interface.

MRP: **385**

# WRIST AND ELBOW SUPPORTS

## WRIST WRAP

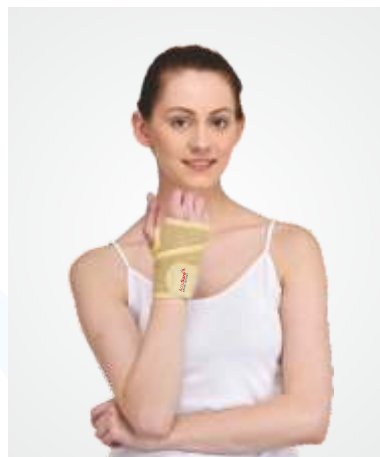


Product Code: **W3**  
Material: **Elastic**  
Sizes Available: **One Size Fits All**

Elastic Wrist Wrap is made of high grade elastic materials and has a double locking mechanism to ensure stronger grip, better fitting and universal sizing. Strong elastic with excellent compressive strength supports, protects and provides requisite immobilization of the wrist. Striped elastic with excellent porosity ensures improved comfort. Can be used ambidextrously.

MRP: **210**

## WRIST BRACE WITH THUMB

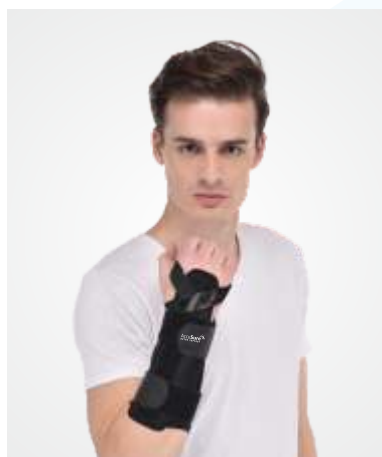


Product Code: **W4**  
Material: **Elastic**  
Sizes Available: **One Size Fits All**

Wrist Brace with Thumb is made of strong elastic with excellent compressive strength that supports, protects and provides requisite immobilization of the wrist. Striped elastic with excellent porosity ensures improved comfort. Anatomical thumb opening is designed for slight abduction and comfort of the thumb. Allows free movement of the thumb and fingers. Can be used ambidextrously.

MRP: **210**

## FOREARM SPLINT



Product Code: **E5**  
Material: **Elastic**  
Sizes Available: **One Size Fits All**

Elastic Forearm Splint ensures effective immobilization with its extra long and strong dorsal and volar splints. Customizable aluminum splints provide perfect fitting and enhanced comfort. PUF lined matty fabric body ensures durability and adds to pleasant aesthetics. Two part ambidextrous design allows customized compression and ease of use.

MRP: **499**

## ELBOW SUPPORT



Product Code: **E8**  
Material: **Elastic**  
Sizes Available: **S, M, L, XL**

Elastic Elbow Support provides comfortable support with its bi-layered construction and dermophilic cotton. The nylon outside ensures long life, excellent aesthetics and color fastness. Four-way stretchable knit with spandex provides effective compression and grip. Three dimensional knitting provides zones of high compression and no compression for excellent effectiveness. Thick knit retains therapeutic warmth.

MRP: **275**

## TENNIS ELBOW SUPPORT



Product Code: **E3**  
Material: **Elastic**  
Sizes Available: **One Size Fits All**

Elastic Tennis Elbow Support provides comfortable support with its breathable PUF fused fabric. The reverse buckle strapping ensures strong grip and form compression. Silicon pad interface absorbs impact and vibration very effectively and provides proprioception. Smart and sporty, it can be used for both therapeutics as well as prophylaxis.

MRP: **210**



## ANKLE SUPPORTS

### ANKLET



**Product Code: A2**  
**Material: Elastic**  
**Sizes Available: S, M, L, XL**

The bi-layered construction and dermophilic cotton of the Elastic Ankle ensures comfort in all weather conditions. Nylon outside ensures long life, excellent aesthetics and colour fastness. Four way stretchable knit with Spandex provides effective compression, comfort and no buckling of fabric. Thick knit retains body heat, provides therapeutic warmth and assures support.

**MRP: 275**

### ANKLE BRACE



**Product Code: A4**  
**Material: Elastic**  
**Sizes Available: One Size Fits All**

The Elastic Ankle Brace provides triple stabilization through hook loop closures, lace tightening and grid splinting and ensures firm protection. Rigid anatomic splints ensures strong immobilization of both dorsi and plantar flexion movement. It also gives sufficient room for malleolus. PUF fused matte fabric body ensures durability, high cushioning, enhance comfort and pleasing aesthetics. Lace pull mechanism ensures single stroke tightening.

**MRP: 650**

### ANKLE BINDER



**Product Code: A3**  
**Material: Elastic**  
**Sizes Available: S, M, L, XL**

The 3D knitting with mellowed heel spot of the Elastic Ankle Binder ensures snug fitting, strong compression, comfortable ankle movement and perfect conformance to the complex anatomy of the ankle. Elasticized wrap in figure of 8 stabilizes ankle, controls inversion /aversion and plantar flexion. Dermophilic cotton ensures comfort in all weather conditions. Nylon outside ensures durability and nice aesthetics.

**MRP: 325**

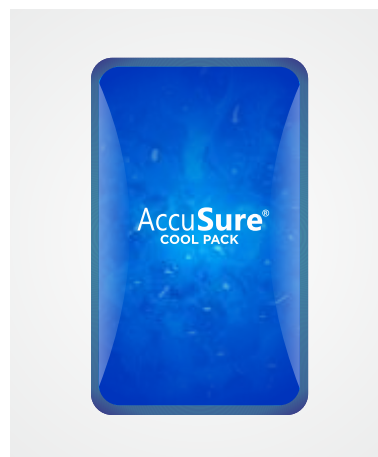




# HEAT THERAPY PRODUCTS



## COOL PACK



Product Code: **H2**  
Material: **Gel based**  
Sizes Available: **One Size Fits All**

The cool pack contains a non toxic gel based formula that radiates energy when chilled. It sustains the chill for a long time and remains flexible even after refrigeration so that it can be applied comfortably on the affected areas of the body. The touch leakage resistant spill proof design makes it apt for joints and muscular pains, sports injuries, strains, sprains and other body ache.

MRP: **350**

## HOT & COLD PACK



Product Code: **H1**  
Material: **Gel based**  
Sizes Available: **One Size Fits All**

Gel based Hot and Cold Therapy medical aid to heal muscular and joint pains, backache, rheumatoid and other arthritic conditions. Recommended for geriatric and post surgical care, it is bacteria and odor free and acts as smart replacement for ice bags, hot water bottles nad heating pads.

MRP: **599**

## ELECTRIC HEATING PADS



Product Code: **H3**  
Material: **Cotton**  
Sizes Available: **Regular, XL**

The electric heating pad is a perfect orthopaedic pain relief aid for all ages. Operates on 60W power and induces heat therapy for local pain relief. Its washable cotton cover and elastic belt makes it more versatile for a variety of applications. Three level temperature setting and overheat security system offer better functionality.

MRP: **750**  
MRP: **850 (XL)**



**AccuSure®**  
ORTHO SUPPORT

**MICR GENE™**  
COMMITMENT TO LIFE

**Microgene Diagnostic Systems Pvt. Ltd.**

Corporate Office: 806, Vikram Tower, Rajendra Place, New Delhi 110008. Tel: 011 25753260-61, Fax: 66272343

Regional Office **(East)**: 2 Digambar Jain Temple Road, 3rd Floor, Kolkata 700007 | Tel: 033 22687453

Regional Office **(West)**: Gala No. 107, 2B Rajprabha Landmark Ind. Estate, Bhoidapada, Vasai East, Thane 401208 | Tel: 0250 6512444

ORTHO SUPPORT